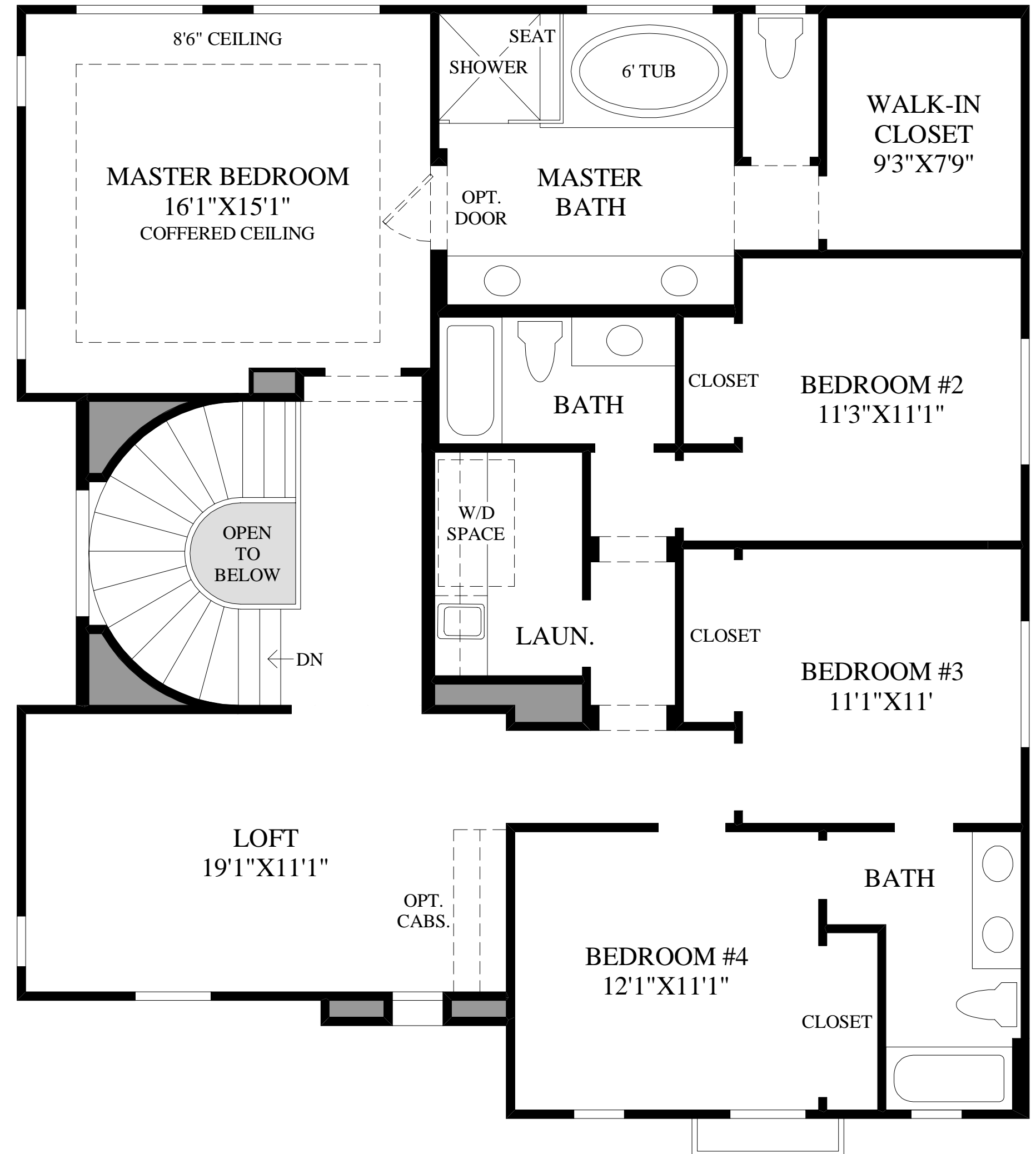


First Floor

TUSCAN EXTERIOR DESIGN SHOWN

THE PACIFIC CREST HIGHLIGHTS

- A stately covered entry greets you before leading you into the open floor plan which is perfect for entertaining.
- Open to the dining room and prominent great room, the kitchen is well equipped with abundant counter space, a large center island with a breakfast bar, and a walk-in pantry.
- This marvelous master bedroom includes a graceful coffered ceiling, a grand walk-in closet, and a wonderful master bath that consists of a dual-sink vanity, a soaking tub, a glass-enclosed shower with a seat, and a private water closet.
- Additionally highlighted is the outstanding luxury outdoor living space, a dynamic loft for home activities, a convenient drop zone, and a first-floor bedroom that is a great accommodation for visiting guests.



Second Floor