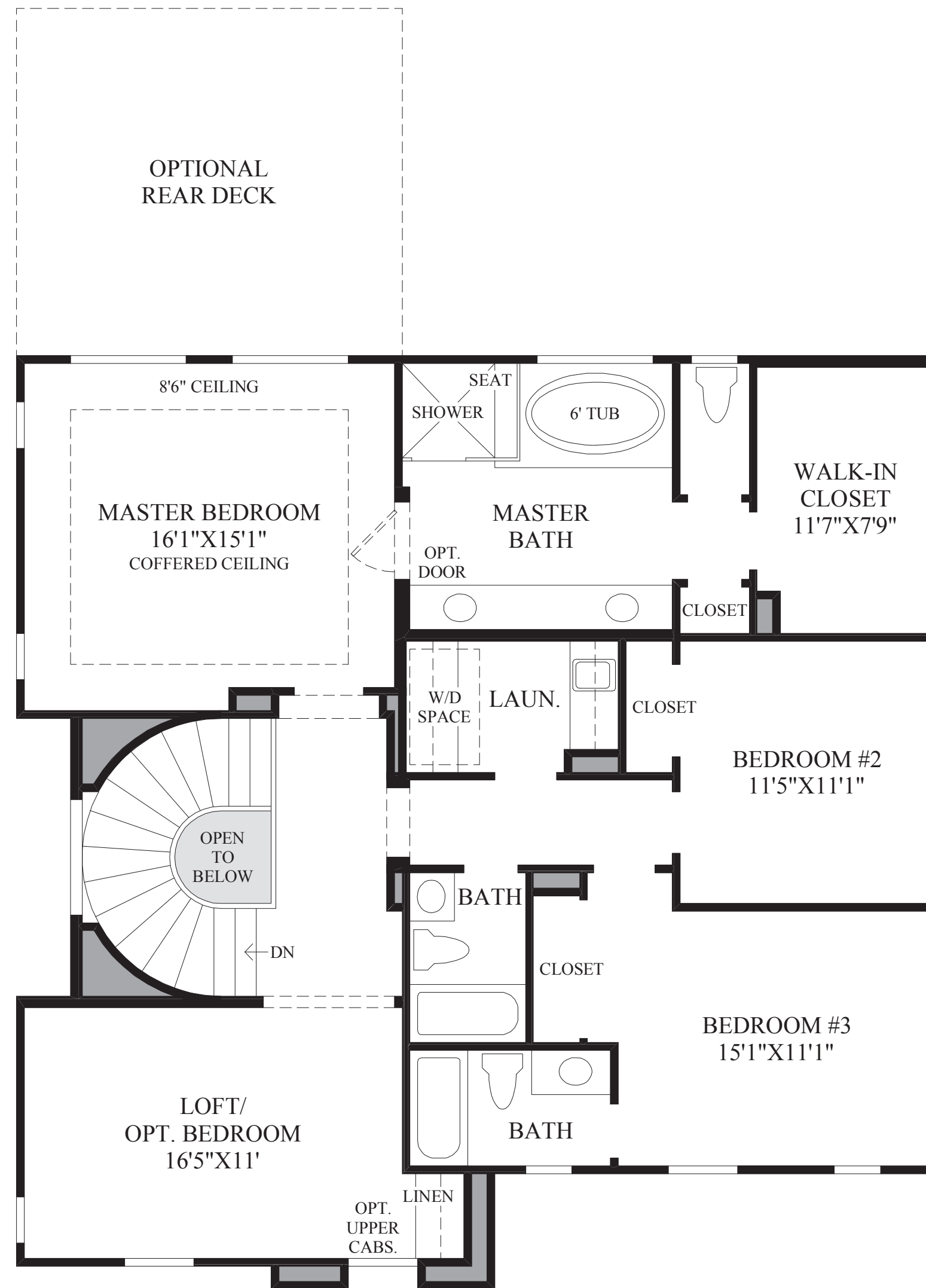
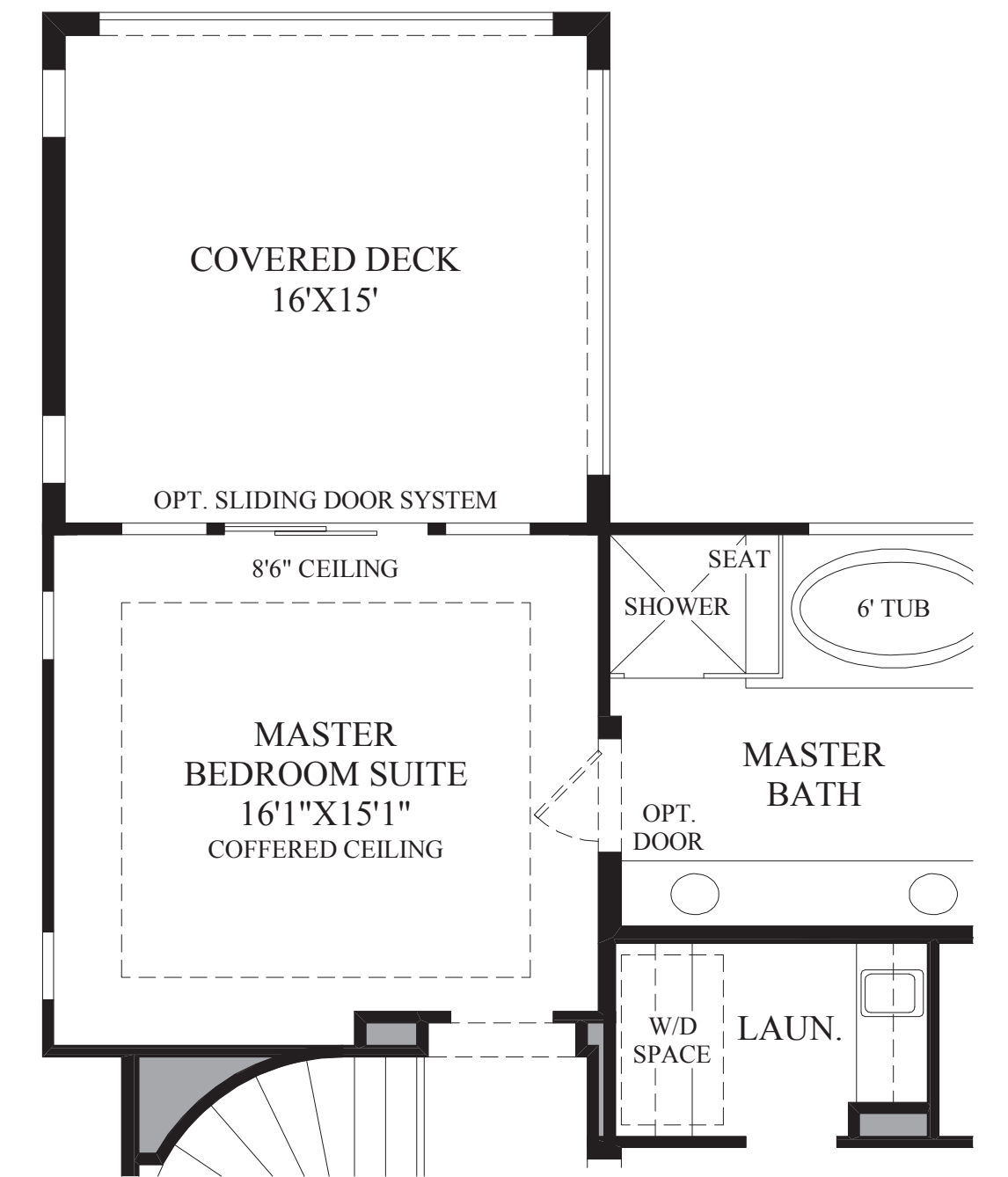


First Floor

TUSCAN EXTERIOR DESIGN SHOWN



Second Floor



SHOWN WITH OPTIONAL MASTER SUITE DECK

THE PACIFIC RIDGE HIGHLIGHTS

- A charming covered entry adds curb appeal while greeting you upon arrival to this wonderfully designed open floor plan.
- The well-proportioned great room boasts an expansive sliding door system that opens the home to a luxury outdoor living space, creating a perfect space for hosting any social gathering.
- Ideal for the at-home chef, this impressive kitchen features ample counter and cabinet space, a walk-in pantry, and a large center island with a breakfast bar for informal dining.
- Complementing the grand master bedroom is an elegant coffered ceiling, a marvelous master bath, and a sizable walk-in closet.
- Additional highlights include a versatile first-floor bedroom, a convenient drop zone, a well-placed laundry, and a generous upper-level loft.