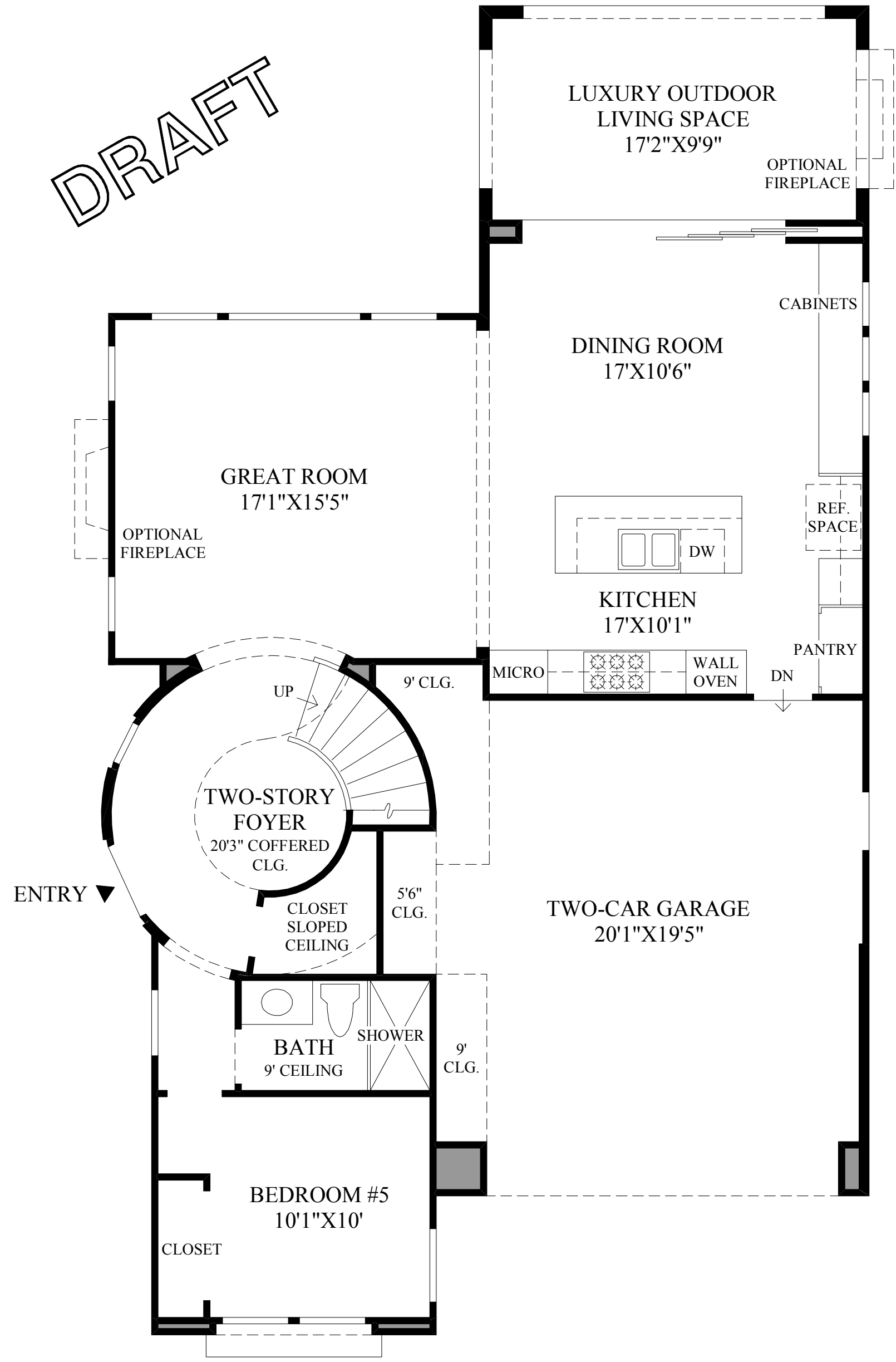
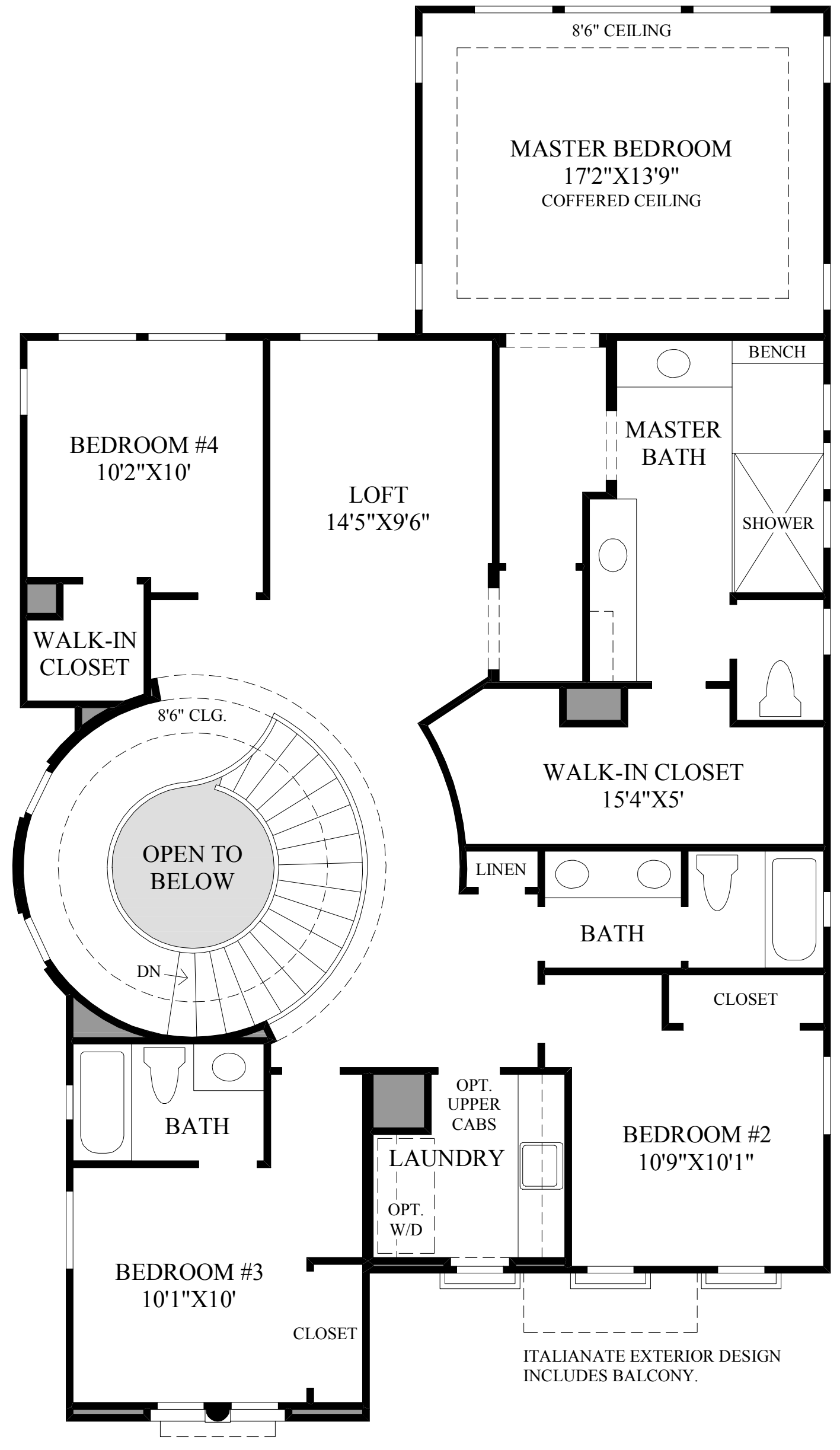


DRAFT



First Floor
SPANISH COLONIAL EXTERIOR DESIGN SHOWN



MEDITERRANEAN EXTERIOR DESIGN
INCLUDES DECORATIVE BALCONY.

Second Floor

DRAFT

THE HELENA HIGHLIGHTS

- Sure to impress upon arrival is this remarkable foyer, which boasts an awe-inspiring double-volume space, a graceful coffered ceiling, and a visually stunning curved staircase.
- An expansive wall of windows fills the well-proportioned great room with light, while allowing for picturesque views of the scenic landscape beyond.
- This charming kitchen is open to the great room and offers a fantastic center island with a wrap-around breakfast bar as well as an adjoining dining room.
- Several radiant window displays illuminate the spacious master bedroom, which is further enhanced by an elegant coffered ceiling and a magnificent master bath which includes dual vanities, a luxurious shower, and a sizable walk-in closet.
- Also featured in this beautiful home is an alluring second-floor loft, a versatile first-floor bedroom, and an elaborate pocketing door system that leads to a marvelous luxury outdoor living space.