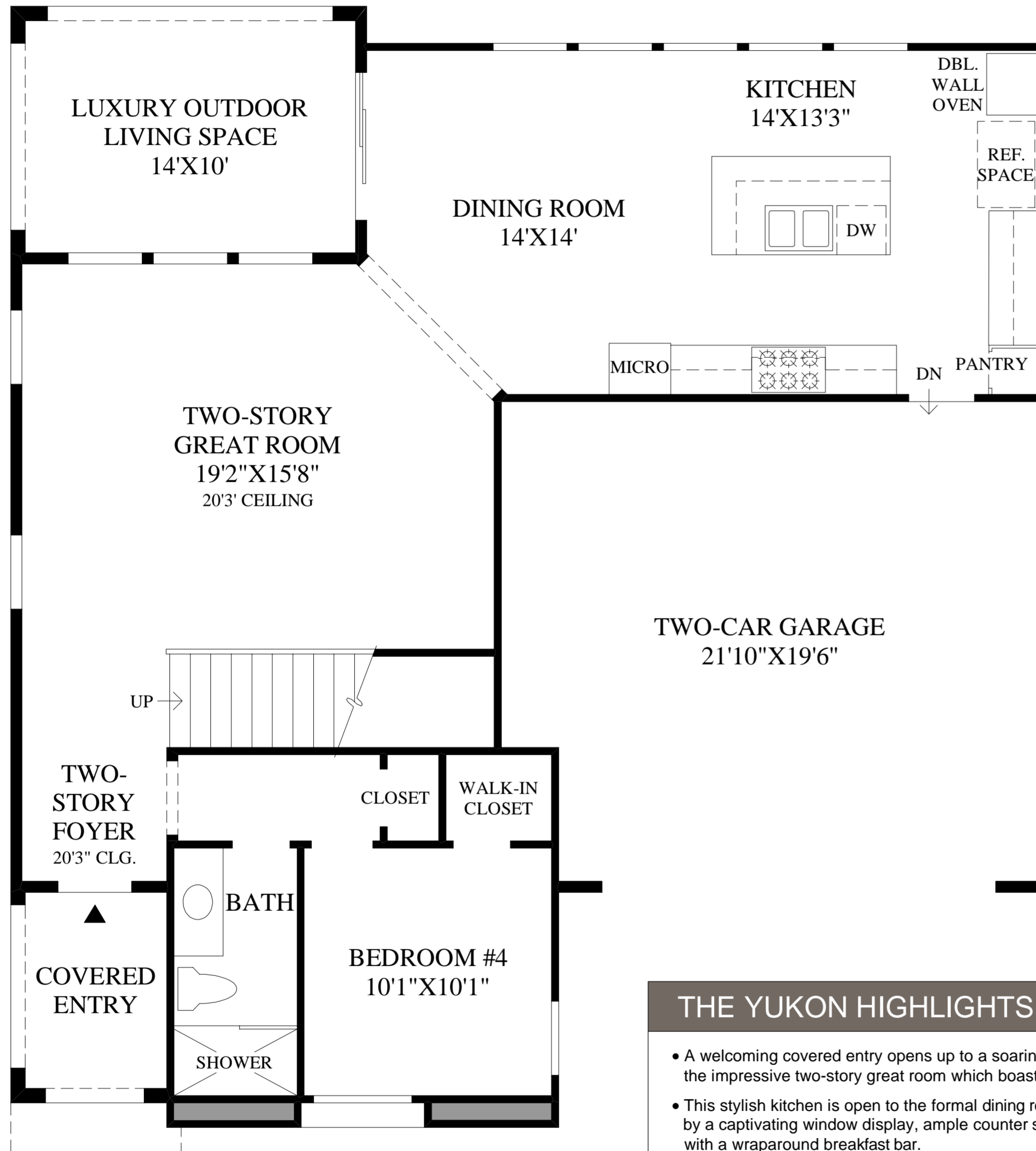


DRAFT



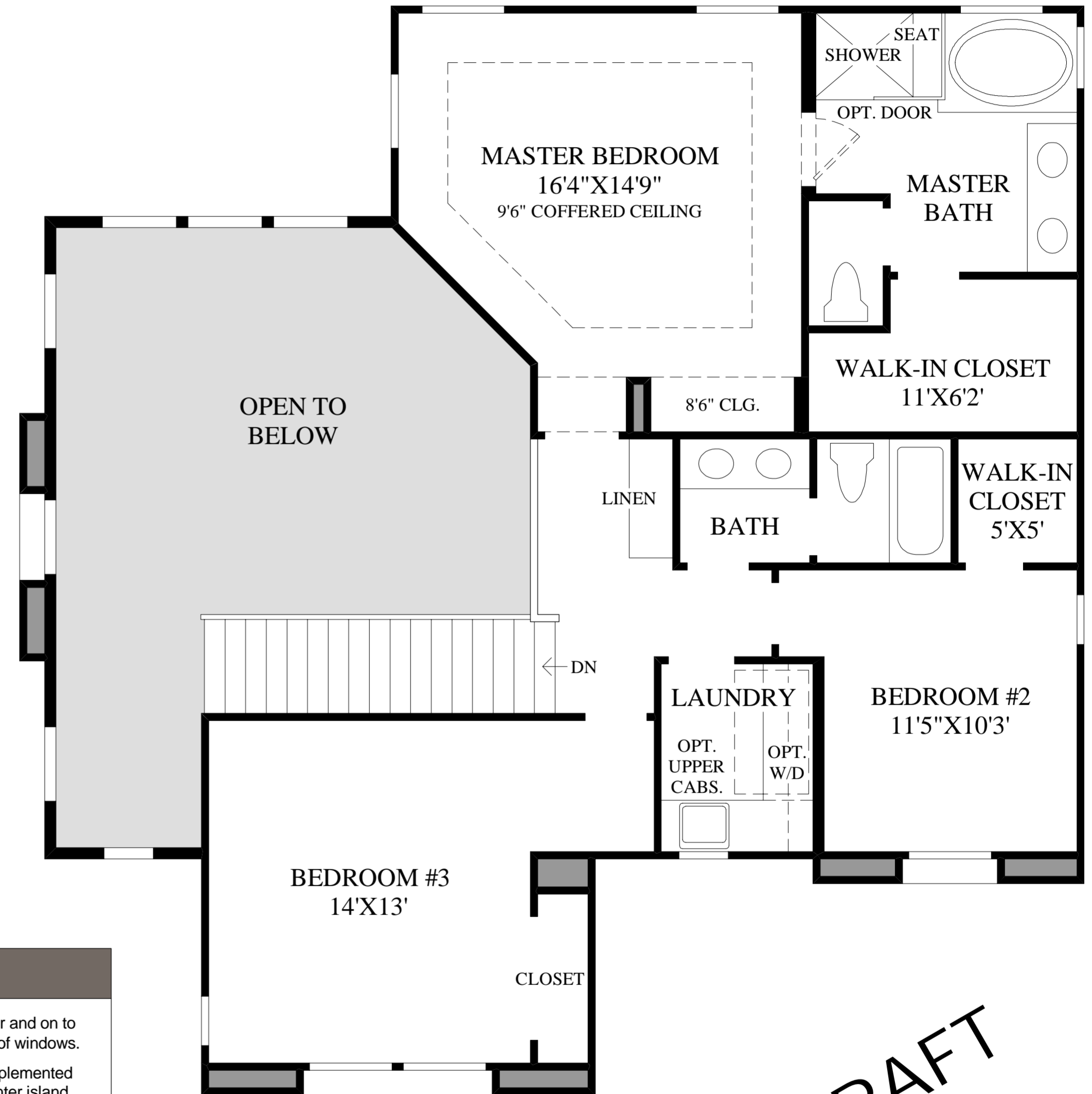
MEDITERRANEAN AND TUSCAN EXTERIOR DESIGNS INCLUDE LARGER COVERED ENTRY.

First Floor

SANTA BARBARA EXTERIOR DESIGN SHOWN

THE YUKON HIGHLIGHTS

- A welcoming covered entry opens up to a soaring two-story foyer and on to the impressive two-story great room which boasts a stately wall of windows.
- This stylish kitchen is open to the formal dining room and is complemented by a captivating window display, ample counter space, and a center island with a wraparound breakfast bar.
- An elevated coffered ceiling, a well-proportioned walk-in closet, and a charming master bath that includes a soaking tub and a separate glass-enclosed shower help to create the sensational master bedroom.
- Additional highlights include a versatile first-floor bedroom, a convenient laundry location, and an alluring luxury outdoor living space.



Second Floor

DRAFT